

# Clyde Township Community Recreation Plan 2022-26



*DRAFT DOCUMENT 12-13-2021*

***Clyde Township  
Community Recreation Plan  
2022-26  
Plan Adopted \_\_\_\_\_, 2022***

**TOWNSHIP BOARD**

**Ernie Manoleas, Supervisor  
Jessica Compton, Treasurer  
Kathleen Turner, Clerk  
Bonnie Deshon, Trustee  
David Dortman, Trustee  
Franz Neruda, Trustee  
Douglas Voight, Trustee**

**PARKS & RECREATION COMMITTEE**

**Sherry Beiser-Walter, Chairperson  
Kay Wolfe, Secretary  
Sandra O'Neill, Member  
Karen Gerspach, Member  
Jessica Compton, Board Liaison**

**PLANNING COMMISSION**

**Michael McGriff, Chairperson  
John Dennis, Co-Chairperson  
Colleen Skrypkun, Secretary  
Douglas Voight, Board Representative  
Rodney Cowen, Building Inspector  
Maurice Beauvais-ZBA Representative  
Jeffery Kern, Member  
Leigh Grimes, Member**

**PREPARED BY**

**Clyde Township Parks and Recreation Committee  
with the Assistance of PM Blough, Inc.**

**PMB**

PM Blough, Inc.

Grand Haven, Michigan

(616) 402.2398

# TABLE OF CONTENTS

---

|  |                |
|--|----------------|
| <b>INTRODUCTION</b>  | <b>PAGE 1</b>  |
| <b>COMMUNITY DESCRIPTION</b>   | <b>PAGE 2</b>  |
| Recreation Plan Jurisdiction   | Page 2         |
| Population   | Page 2         |
| Community Background   | Page 3         |
| Woodlands and Wildlife   | Page 3         |
| Zoning Districts   | Page 3         |
| <b>ADMINISTRATIVE STRUCTURE</b>                                      | <b>PAGE 5</b>  |
| General Law Township and Township Board                              | Page 5         |
| Role of Advisory Planning Committee                                  | Page 5         |
| Department, Authority and Organization Chart                         | Page 5         |
| Annual Budget  | Page 6         |
| Current Funding Sources  | Page 7         |
| Roles of Volunteers and Organizations                                | Page 7         |
| Relationship with Clyde Township Community School District           | Page 7         |
| <b>RECREATION INVENTORY</b>  | <b>PAGE 8</b>  |
| Description of Methods Used to Conduct Inventory                     | Page 8         |
| Inventory of Township Parks and Recreation Facilities                | Page 9         |
| Township Hall Park   | Page 10        |
| Jake Simpson Wilderness Park   | Page 11        |
| Fire Fighters Park   | Page 13        |
| Bill Bearss Memorial Park  | Page 15        |
| ADA Accessibility Assessment of Existing Park Facilities             | Page 17        |
| ADA Accessibility Review   | Page 19        |
| Nearby Community Parks   | Page 21        |
| St Clair County Parks  | Page 23        |
| State of Michigan Parks  | Page 25        |
| Nature Sanctuaries   | Page 26        |
| Community Special Events and Recreation Programs                     | Page 27        |
| Status Report for All Grant Assisted Parks and Recreation Facilities | Page 28        |
| <b>DESCRIPTION OF THE PLANNING PROCESS</b>                           | <b>PAGE 29</b> |
| <b>DESCRIPTION OF THE PUBLIC INPUT PROCESS</b>                       | <b>PAGE 30</b> |
| Park Tours, Inventory, and ADA Assessment                            | Page 30        |
| Early Public Input / Electronic Survey                               | Page 30        |
| 30-Day Public Review Period  | Page 30        |
| Resolution for Adoption and Final Public Hearing                     | Page 30        |

**GOALS & OBJECTIVES**

**Page 31**

**ACTION PROGRAM**

**PAGE 35**

Land Acquisition

Page 35

Recreational Programming

Page 35

Facility Development

Page 35

Action Program Project List

Page 36

Project Descriptions

Page 37

**SUPPORTING DOCUMENTATION**

**PAGE 39**

Early Input Before Draft Plan is Written/Survey Results

Notice of Draft Plan for 30 Day of Public Comment

Notice of Plan Review Period and Final Public Hearing

Minutes of Public Hearing

Adoption of Plan

Transmittal Letters

MDNR Checklist Form

Post-Completion Self Certification Reports

## INTRODUCTION

---

The Community Recreation Plan is developed to focus on recreational needs and how to address them over the next five years and beyond. The key focus of this document is for the years 2022-2026 and this document as adopted will replace the previous plan, *Clyde Township, Community Recreation Plan 2016-2021*.

This Recreation Plan was prepared by the Clyde Township Parks and Recreation Committee and has been adopted by the Clyde Township Board of Trustees. The Plan is intended to guide future Township parks and recreation services, facilities, and future development. In addition, the Plan is intended to form the basis for future applications for recreation grant funding from the Michigan Department of Natural Resources. The Recreation Plan should be viewed as one component of the Township's over-all long-range planning efforts.

In updating the plan, the existing plan was reviewed, and key pieces of information updated including the recreation inventory, Goals and Objectives and a new descriptive Action Program of future recreational projects were developed.

The plan was prepared by the Township with the assistance of recreation planning consultant, PM Blough, Inc. The preparation of this document included opportunities for public participation, an electronic survey and a month of public review time for the draft document, and a formal public hearing held by the Township Board.

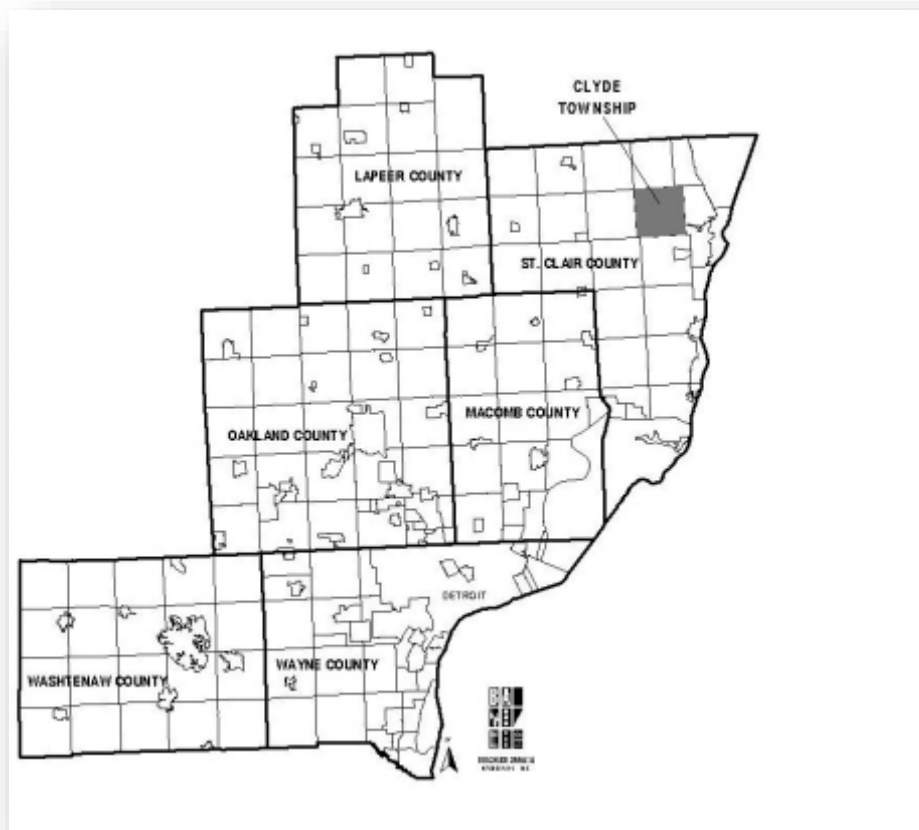
## COMMUNITY DESCRIPTION

---

The Community Description section of the plan describes the jurisdiction of the recreation plan and background information for the Clyde Township.

### RECREATION PLAN JURISDICTION

This Community Recreation Plan is prepared solely for Clyde Township located in northeastern St. Clair County. The Township's neighbors include Grant and Burtchville Townships to the north, Kenockee Township to the west, Fort Gratiot and Port Huron Townships to the east, and Wales and Kimball Township to the south. A Regional Location map illustrating Clyde's location in southeast Michigan is provided below.



### POPULATION

The US Census of Population reported there were 5,523 households in 2020, a decrease of 56 since the 2010 census. This represents a decrease of approximately 1.0% over the last decade. The Township population grew steadily from 1940 through 2000. The highest rate of growth occurred during the 1960s and 1970s, when the population increased 58% in the 1960s and 55% in the 1970s. Between the 2000 census and 2010 census, population growth began to level off.

SEMCOG projections do not estimate any growth through 2045 and even projects a slight decline in population. The 2020 census data confirms the trend of the long-term projections.

### **COMMUNITY BACKGROUND**

The Township is named for the River Clyde in Scotland. In 1825, a Scotsman Robert Smart, with the backing of Detroit interests, built a mill on the Black River. Smart named the place "Clyde Mills", after the river in where he had lived as a boy. Clyde Township was organized in March 1836 and took its name from the settlement. The Township encompasses 36 square miles. The primary water system that courses through the township is the Black River. There are several smaller tributaries that eventually empty into the river in various locations.

### **WOODLANDS AND WILDLIFE RESOURCES**

Clyde contains a significant number of woodlands and wetlands. Woodlands are concentrated near the Port Huron State Game Area which includes large, wooded areas on either side of the Black River. Wetlands are scattered throughout the Township although many are located along the Black River corridor. Most of the wetlands are categorized as forested wetlands. Providing access to these natural areas through the development of passive recreational activities, such as a trail system, will preserve these areas for future generations while assisting to meet the recreational needs of the community.

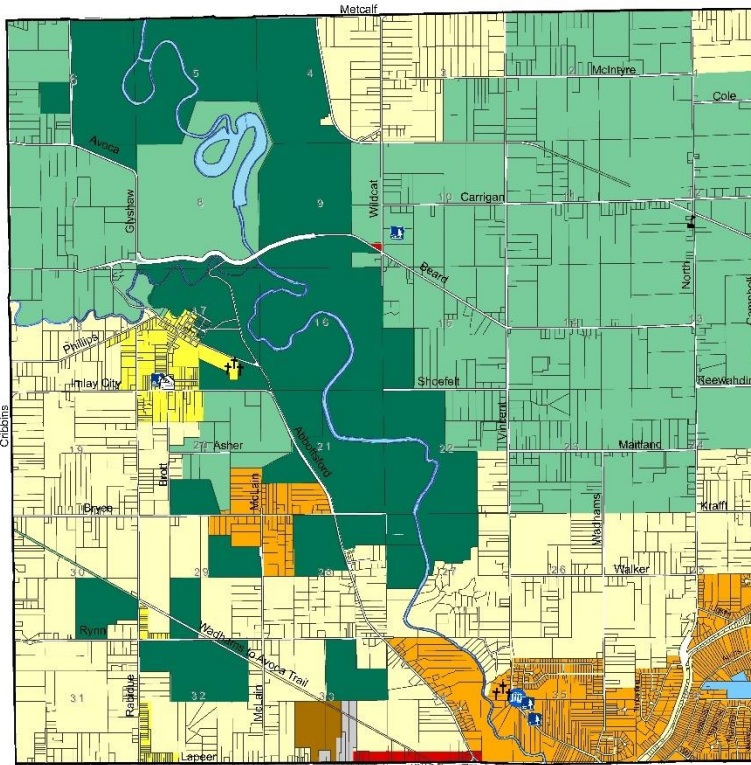
The Game Area serves as an important migratory stop over for many species of birds on their way to northern nesting grounds. It is also an important breeding area for at-risk species such as Cerulean and Golden-winged Warbler, Wood Thrush and possibly Bald Eagle. Several southern species normally not found in Michigan such as Hooded Warbler and Louisiana Water Thrush nest here. The woods are also home to game birds such as Ruffed Grouse and introduced Wild Turkey. Ring-necked Pheasant and Northern Bobwhite Quail can be found in surrounding fields as can the threatened Henslow's Sparrow.

### **ZONING DISTRICTS**

Clyde Township's zoning ordinance includes 11 zoning classifications. There are seven residential zoning classifications, including one-family residential districts, two-family residential districts, a multiple-family residential district, and a mobile home park district. There are two retail or business districts. The remaining zoning districts include limited manufacturing and open space. A copy of the Zoning Map, adopted in 2006, is included.



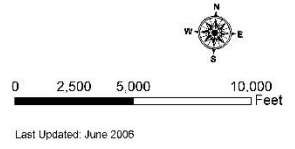
# CLYDE TOWNSHIP ZONING



- † Cemetery
- 🏛️ Twp Hall
- 🚒 Fire Hall
- 🏞️ Park
- 📮 Post Office
- RA Residential Agriculture
- RSF Residential Suburban Farm
- R-1 Residential Single Family
- R-2 Residential Single Family
- MF Multiple Family Residential
- MHP Mobile Home Park
- LC Local Commercial
- LM Limited Manufacturing
- OS Open Space

This is the official Zoning Map referred to in Article 3 of the Clyde Township Zoning Ordinance,  
 Adopted 9-1-2008  
 Barbara Cutcher  
 Township Supervisor  
 Kathleen Turner  
 Township Clerk

## Zoning Districts Map Clyde Township, St. Clair County, MI





## **ADMINISTRATIVE STRUCTURE**

---

The Administrative Structure section of the plan provides background information regarding the structure and operation of the Township administration and parks.

### **GENERAL LAW TOWNSHIP AND TOWNSHIP BOARD**

Clyde is a general law township with a Township Board overseeing daily operations and budget expenditures. The Township Board approves all grant applications and expenditures of funds for parks and recreation. Programs and activities are planned with a variety of community groups and County agencies. Maintenance and capital improvements are typically performed on a contractual basis, although there have been significant volunteer efforts in both areas.

### **ROLE OF ADVISORY COMMITTEE**

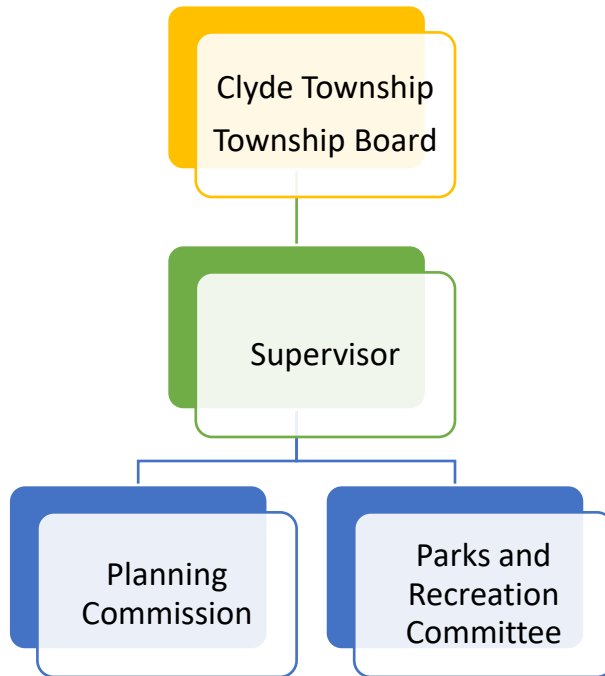
The Township's Parks and Recreation Committee is an advisory committee of volunteer community members and reports directly to the Township Board. The Parks and Recreation Committee meets monthly and are charged with managing the 5-year Community Recreation Plan and assists the Township in the administration of the parks. This coordination of efforts helps to provide the best facilities and opportunities for recreation for all its citizens and visitors to the area.

Clyde Township will endeavor to make its parks and recreation programs open and accessible to all its citizens. The Township maintains a policy of constructing its new facilities to meet current ADA Standards, and new repairs and improvements further accessibility within the parks to the greatest extent possible based on funding.

Clyde Township also provides support to programs of the Clyde Township Historical Society, such as the Old Time Hoedown Festival and Ox Roast, which are held at the historic township hall (built in 1879) located in Bill Bearss Memorial Park.

### **DEPARTMENT, AUTHORITY AND ORGANIZATIONAL CHART**

The parks and recreation facilities are owned by the Township and maintenance and operation of the parks is completed by the Department of Public works. The Township does not have a park director or programming staff. Overall day to day administration of the parks is the responsibility of the Township Supervisor.



**ANNUAL BUDGET**

The primary funding for park operation and maintenance is through the General Fund of the Township. The budgeted annual expenses for parks in 2021-22 totaled \$10,000

The Township has received funding for recreational purposes from St. Clair County through disbursement from a County-wide recreation millage, which was first approved by county voters in 1994. The recreation millage has subsequently been approved by the voters several times. The disbursement is based on municipalities’ population. The 2021 disbursement to Clyde Township was \$27,195

The Township also uses money from its General Fund for recreation programming and capital improvements. The 2021-2022 budget for Parks and Recreation is \$10,000. These funds included park maintenance, operating supplies, utilities, and small construction projects. As of December 2021, the Township had \$98,121.31 in its Recreation Fund. The annual cost of Parks and Recreation maintenance is approximately \$\_\_\_\_\_

Clyde Township has two full-time and one part time seasonal DPW employees who perform park maintenance. The Township also partners with volunteer organizations such as a local youth baseball travel league that has renovated and maintained the baseball fields at Bill Bearss Memorial Park.

### CURRENT FUNDING SOURCES

Funding sources for parks operation, maintenance, programming, and capital improvements are provided via the annual St Clair County millage disbursement and the Township General Fund. Additional funds for capital improvements within the Township are also funded through grants when available.

### ROLE OF VOLUNTEERS AND ORGANIZATIONS

The Parks and Recreation Committee is made up of eight volunteer community members who meet monthly and are responsible for managing the Community Recreation Plan. The Committee sets goals based on the Plan and assists the Township in achieving those goals. The Committee actively pursues recreational possibilities and projects throughout the Township and in cooperation with the City of Port Huron Parks and Recreation Department. It has a link on its website the City's Recreation Program website and Clyde Township residents pay only half of the cost for each program. The Township is invoiced by the City for the other half.

### RELATIONSHIP WITH CLYDE COMMUNITY AREA SCHOOL DISTRICTS

Clyde Township is served by the Port Huron School District and the Yale School District. The nearest schools and their facilities located within the Township are listed below:

#### Recreational Facilities at School District Grounds

| District                   | School                         | Facilities  |
|----------------------------|--------------------------------|---|
| Port Huron School District | Indian Woods Elementary School | Playground Equipment, Basketball Hoops,                       |
|                            | Kimball Elementary School      | Playground Equipment, Basketball Hoops                        |
|                            | Michigamme Elementary School   | 2 Soccer Fields, Basketball Hoops, Playground Equipment       |
|                            | Fort Gratiot Middle School     | Baseball Field, Playground Equipment, Track, Basketball Hoops |
|                            | Central Middle School          | Baseball Field, Track, Basketball Hoops                       |
| Yale School District       | Avoca Elementary School        | Baseball Field, Playground Equipment, Basketball Hoops        |

## **RECREATION INVENTORY**

---

The Recreation Inventory section of the plan provides information on the existing recreational lands and opportunities that exist for the residents within the community.

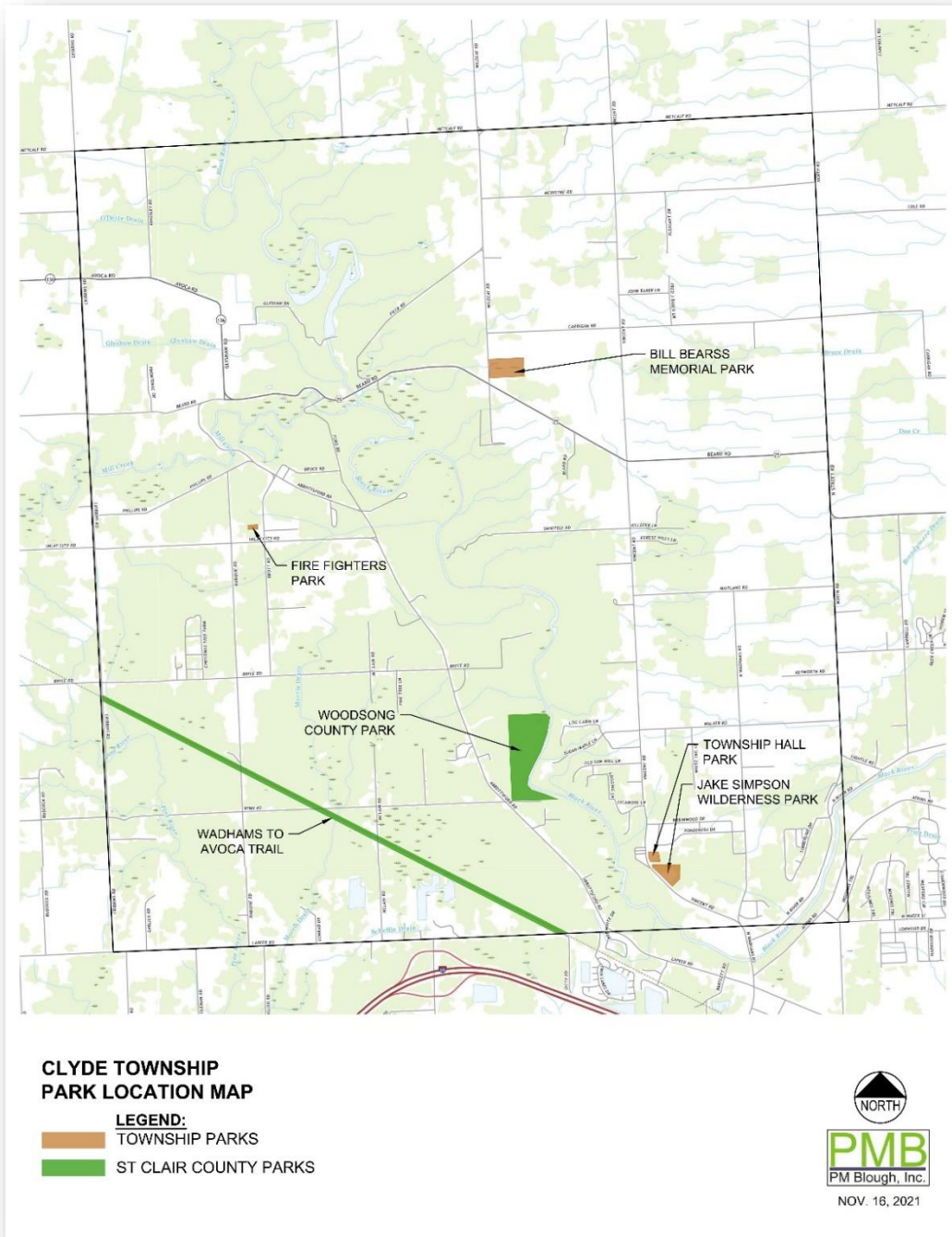
### **DESCRIPTION OF METHODS USED TO CONDUCT THE INVENTORY**

The completion of the parks inventory was conducted in May of 2021 by members of the Parks and Recreation Committee and consultant Pam Blough, PLA, of PM Blough, Inc, the planning consultant. Each Park was reviewed for updated facilities and ADA accessibility, as well as for potential future improvements.

## INVENTORY OF TOWNSHIP PARKS AND RECREATION FACILITIES

Clyde Township has four parks: Township Hall Park, Jake Simpson Wilderness Park, Fire Fighters Park and Bill Bearss Memorial Park. There is also an undeveloped property along the Black River that could be developed as parkland. A Location Map is provided below and a description of each park follows:

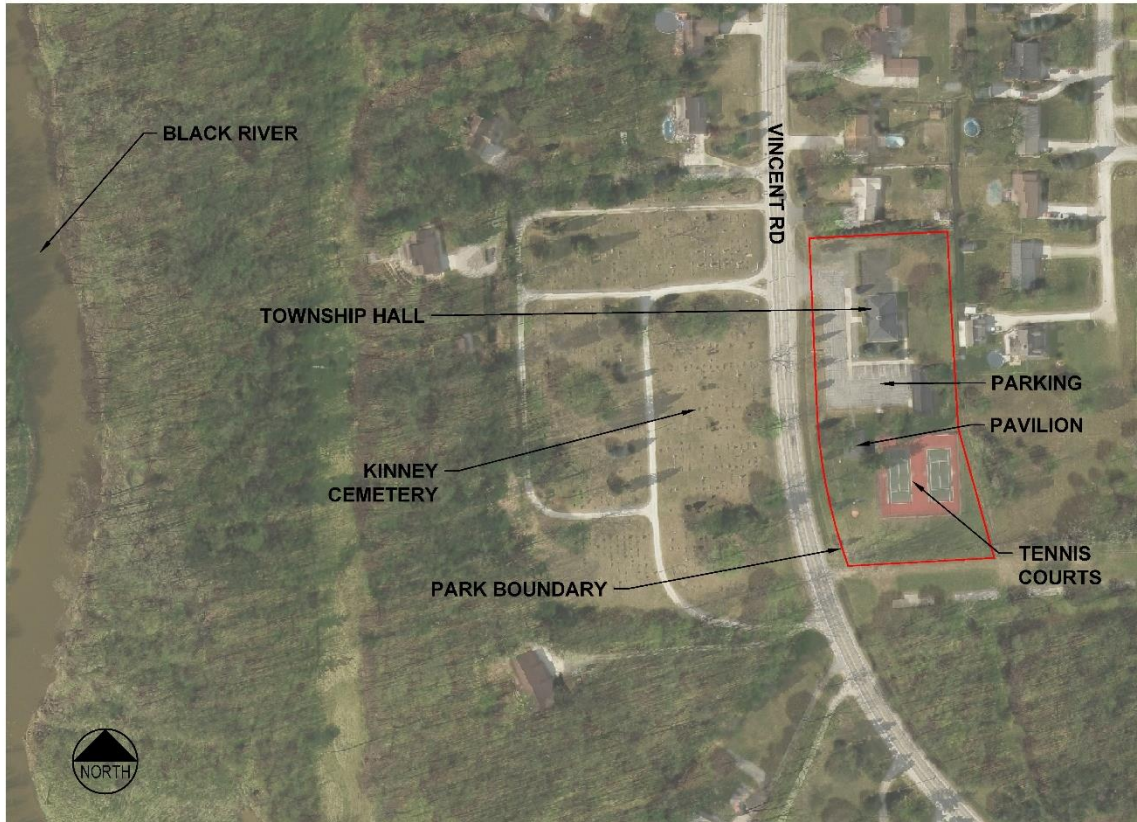
### PARKS AND FACILITIES LOCATION MAP





### TOWNSHIP HALL PARK – ONE ACRE

This 1-acre park is adjacent to the Clyde Township Hall and includes two tennis courts, as well as several pieces of play equipment. There is a picnic pavilion with tables and cooking grills. A paved access walk connects the parking area to the pavilion and courts. There are two temporary portable toilets onsite as well.



TOWNSHIP HALL PARK  
BOUNDARY MAP

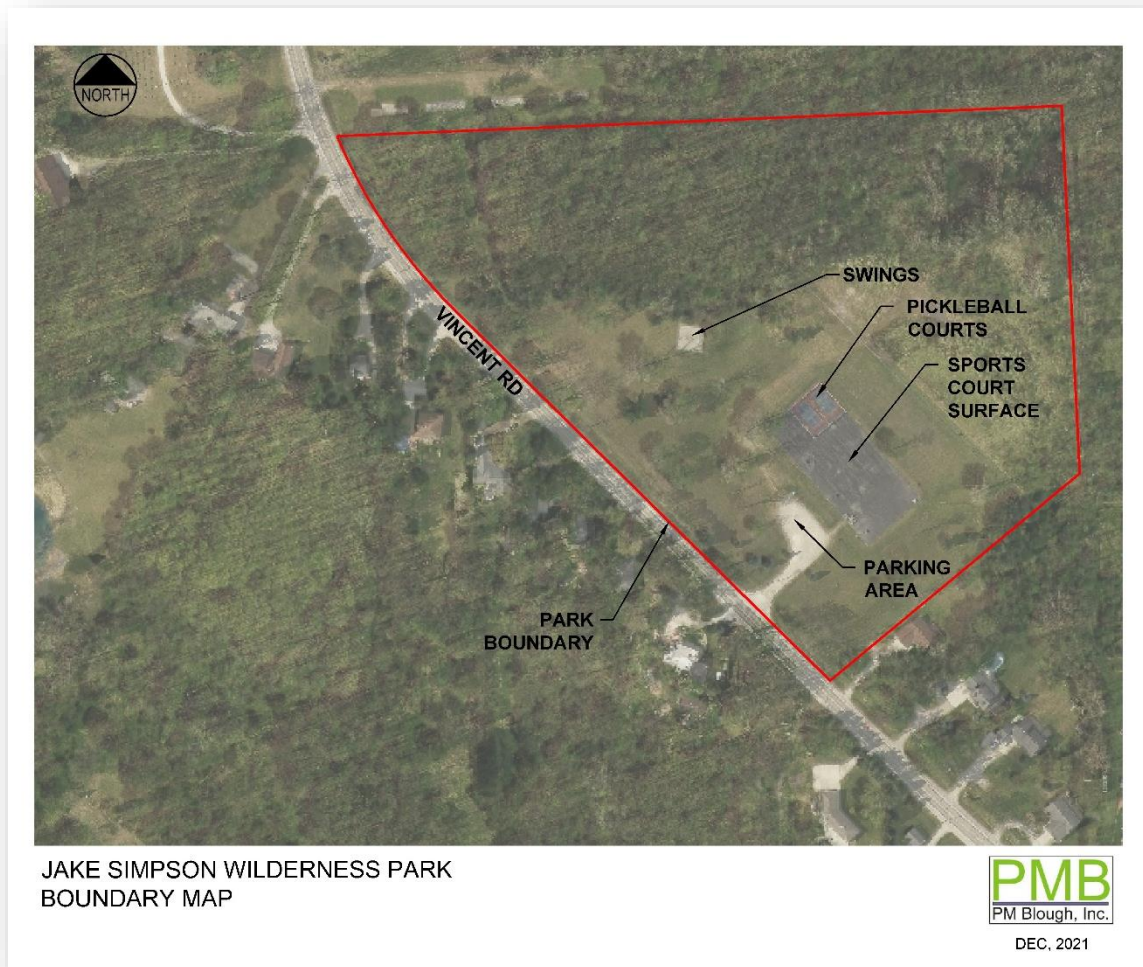


DEC, 2021



### JAKE SIMPSON WILDERNESS PARK – 17 ACRES

Jake Simpson Wilderness Park is located adjacent to Township Hall Park along Vincent Road. The 17-acre park features a large asphalt surface used for inline skating and basketball and two pickleball courts. There are three basketball hoops located at the edge of the surface. Other elements to the park include a swing set and picnic tables. There is no ADA accessible parking within the park.







**FIRE FIGHTERS PARK - LESS THAN 1 ACRE**

Fire Fighters Park is located behind Clyde Township Fire Hall No. 1. The small park includes a basketball court that also serves as an ice rink in the winter. There is a playground and swing set located close to the Fire Hall. Picnic tables are also located in the park. The Ruby Lions Hall is located adjacent to the park. Those grounds include a baseball field but is not a part of the park.



FIRE FIGHTERS PARK  
BOUNDARY MAP



DEC, 2021





**BILL BEARSS MEMORIAL PARK – 20 ACRES**

Bill Bearss Memorial Park is Clyde Townships largest park at 20 acres. The historic Clyde Township Hall, built in 1879, is located within the park and is utilized for programs by the Clyde Township Historical Society, such as the Old Time Hoedown Festival and Ox Roast. The park has both full-sized and youth soccer fields, as well as two baseball diamonds. There are basketball hoops in the paved parking lot area. A playground and swing set are located between the parking area and the athletic fields. A picnic pavilion is located adjacent to the parking area with tables and grills. The park also includes a small storage shed and a concession stand.



BILL BEARSS MEMORIAL PARK  
BOUNDARY MAP



DEC, 2021





## **ADA ACCESSIBILITY ASSESSMENT OF EXISTING PARK FACILITIES**

The *Guidelines for the Development of Community Park, Recreation, Open Space and Greenway Plans* prepared by the Michigan Department of Natural Resources Grant Management Division requires the completion of an Accessibility Assessment. This Plan includes the following areas directed to the identification and planning for ADA and Universal Accessibility.

### **ADA Park Review and Assessment**

This assessment was completed in each park during the individual park tours and the information has been incorporated into the planning process.

### **Individual Park Inventory Sheets**

A brief description of the accessibility of each park is included for public information in the above park inventory information.

### **ADA Accessibility Assessment**

An ADA accessibility Assessment is included at the end of this section which summarizes the accessibility of the parks within the community based on the MDNR Accessibility Ranking System further discussed below.

### **Goals and Objectives:**

The Township included future Goals and Objectives for improving ADA accessibility within the parks through renovation and future development projects. These are included in the Goals and Objectives Section.

### **Action Plan and Future Projects**

The Township embraces the commitment to make the parks more accessible. As they renovate and improve the existing parks the facilities are being upgraded and made more accessible. New facilities are incorporating the principals of Universal Design from the initial design through construction. These projects are being accomplished as funding is available for park improvements.

### **MDNR ADA Accessibility Ranking System**

The MDNR planning booklet provides a ranking system was updated in November of 2018 to the following to be utilized in evaluating public parks and open spaces. This ranking system is based on the following:

- 1= none of the site elements meet 2010 ADA Standards for Accessible Design
- 2= some of the site elements meet 2010 ADA Standards for Accessible Design
- 3= most of the site elements meet 2010 ADA Standards for Accessible Design
- 4= all of the site elements meet 2010 ADA Standards for Accessible Design
- 5= the facility meets the Principals of Universal Design

Appendix D. Barrier Free Accessibility Requirements for Parks, within the guideline's booklet, provides the following written comments regarding parks and accessibility.

*“Recreational areas, facilities, and programs play an important role in the life of the community; therefore, it is essential that people with disabilities have an equal opportunity to enjoy these areas and any programs provided. Federal and state laws prohibit discrimination on the basis of disability, and these laws apply to parks and other recreation lands and programs controlled and operated by local units of government. The DNR has a strong commitment to barrier free recreational opportunities in our Department-managed programs and facilities. This commitment extends to those communities that receive recreation grants.*

*Under the state Utilization of Public Facilities by the Physically Limited Act (Public Act 1 of 1966, as amended) all facilities, including improved areas used for recreation, must meet the barrier free design requirements contained in the state construction code. Under this act, the administration and enforcement related to barrier free design requirements are vested in the local or state government agency responsible for issuing a building permit. If the project does not require a building permit, administration and enforcement of barrier free design requirements are vested in the Department of Licensing and Regulatory Affairs.*

*Any request for an exception to the barrier free design requirements of the state construction code must be submitted to the Barrier Free Design Board, within the Department of Licensing and Regulatory Affairs. (517-241-9328). The Barrier Free Design board has the responsibility to receive, review, and process requests for exceptions to barrier free design specifications; require appropriate equivalent alternatives when exceptions are granted; and receive, process, and make recommendations for barrier free design rules.*

*The Department of Justice published revised regulations for Titles II and III of the Americans with Disabilities Act of 1990 “ADA” in the Federal Register on September 15, 2010. These regulations adopted revised, enforceable accessibility standards called the 2010 ADA Standards for Accessible Design, “2010 Standards or Standards”. The 2010 Standards set minimum requirements—both scoping and technical—for newly designed and constructed or altered state and local government facilities, public accommodations, and commercial facilities to be readily accessible to and usable by individuals with disabilities. The Federal Standards have precedence over State codes.*

*Adoption of the 2010 Standards also established a revised reference point for Title II entities (public entities-State or local government) that choose to make structural changes to existing facilities to meet their program accessibility requirements and it establishes a similar reference for Title III entities (places of public accommodation) undertaking readily achievable barrier removal.*

*Because the state construction code and 2010 Standard does not apply to many recreation facilities, it is essential that you also be aware of and understand the existing federal guidelines covering these types of facilities. On September 26, 2013 The Federal Architectural and Transportation Barriers Compliance Board (known as the Access Board)*



*issued updated guidelines, entitled the Accessibility Guidelines for Outdoor Developed Areas. These guidelines are enforceable under the Architectural Barriers Act (ABA) Standards for federal agencies on November 26, 2013. They should eventually be adopted as enforceable standards for Title II and III agencies, but until that occurs, the existing ADA Standards must be followed when the two conflict.*

*Included in the Outdoor Guidelines are technical provisions for the number and types of recreation facilities including camping facilities, picnic facilities, viewing areas, trails and beach access routes. While none of these guidelines has yet been adopted for Title II and Title III agencies, they represent the best information available on developing barrier free recreation facilities. Questions regarding 2010 ADA standards and the Accessibility Guidelines for Outdoor developed Areas should be directed to the Department of Justice ADA Technical Assistance, 800-514-0301 (voice) or 800-514-0383 (TTY)."*

### **ADA Accessibility Review**

An ADA accessibility review was conducted in each park. A summary of the findings is given below and rated based on the above MDNR standards.

#### **Township Hall Park**

Township Hall Park is an active recreation park that includes tennis courts, play equipment and a picnic shelter. The Park received a MDNR rating of 2=some of the site elements meet 2010 ADA Standards for Accessible Design. There is an accessible pathway from the parking to the pavilion and tennis court, but the play equipment is not accessible. Accessible parking directly associated with the park facilities are also deficient. Any improvements made at the park will be designed to meet the ADA Standards.

#### **Jake Simpson Wilderness Park**

Jake Simpson Wilderness Park is an active recreation park that includes some sport courts and a swing set. The Park received a MDNR rating of 1=none of the site elements meet 2010 ADA Standards for Accessible Design. There is not a paved parking lot and no accessible spaces. Thus, there are no accessible pathways to the remaining facilities. As improvements are made to this park, all of the facilities will be designed to meet the ADA Standards.

#### **Fire Fighters Park**

Fire Fighters Park is an active recreation park that includes a basketball court/ice skating rink along with some play equipment. The Park received a MDNR rating of 1=none of the site elements meet 2010 ADA Standards for Accessible Design. There is not a paved parking lot and no accessible spaces. Thus, there are no accessible pathways to the remaining facilities. As improvements are made to this park, all the new facilities will be designed to meet the ADA Standards.

### **Bill Bearss Memorial Park**

Bill Bearss Memorial Park contains several sports fields, a picnic pavilion and playground areas. The Park received a MDNR rating of 2=some of the facilities meet 2010 ADA Standards for Accessible Design. There is access from the paved parking lot to the picnic pavilion. However, there are no accessible pathways to the play facilities, nor the athletic fields. Future improvements will be designed to meet the ADA standards for accessible design.

### **Black River Property**

The Black River Property is Undeveloped. There have not been any improvements made to the property at this time. Future improvements will be designed to meet the ADA standards for accessible design.

## NEARBY COMMUNITY PARKS

The residents of Clyde Township can enjoy the available facilities of several surrounding area communities.

### Burtchville Township

Available facilities at the Burtchville Township Park on Lake Huron include baseball diamonds, picnic shelters, playground equipment, tennis courts, a roller blade area, basketball hoops, a skate park, restrooms, walking paths and a swimming beach.

### Fort Gratiot Township

The Township has four parks: North River Road Park, Robert E Crawford Ball Fields, McIntyre Park, Keewahdin Road Beach and Fort Gratiot Pond. There are a variety of facilities available at these parks, including ballfields, basketball courts and playgrounds. Many of the parks offer river access and fishing opportunities.

**Fort Gratiot Township Recreational Facilities**

| Facility                                   | Amenities   |
|--|---|
| North River Road Park (on the Black River) | 1 Baseball Diamond, 2 Tennis Courts, Basketball Court, Picnic Tables, Portable Toilets, ADA Canoe/Kayak Launch, Boat Launch |
| Robert E Crawford Ball Fields              | 5 Little League Baseball Diamonds, 2 Adult Baseball Diamonds  |
| McIntyre Park                              | River Access, fishing access, trails, dog park  |
| Keewahdin Road Beach                       | Lake access, fishing access   |
| Fort Gratiot Pond                          | Pond Access, fishing access, paved trails, picnic area, fishing dock  |

### Kenockee Township

Kenockee Township has one 20-acre park adjacent to the Township Hall, which has 2 picnic pavilions, a sledding hill, 2 baseball diamonds and playground equipment.

### Kimball Township

Kimball Township has two Township parks, Community Park No. 1 on Howard Road and Community Park No. 2 on Henry Road in Smiths Creek. The facilities and their major features are listed in the Table below.

**Kimball Township Recreational Facilities**

| Facility             | Amenities   |
|----------------------|---|
| Community Park No. 1 | 3 Little League Baseball Diamonds, Tennis Court, Concession Stand, 2 ADA Accessible Picnic Pavilions, Restrooms, Fishing Pond with 2 Docks and a Swimming Beach |
| Community Park No. 2 | Picnic Pavilion, Ice Skating Rink   |

### Port Huron Township

Port Huron has seven recreational facilities. The facilities and their major features are listed below.

#### Port Huron Township Recreational Facilities

| Facility  | Amenities   |
|---|---|
| Lions Den   | Picnic Area, 4 Fishing Platforms, Playground Equipment, Lion's Club Building                                      |
| Water Street Park                                 | Basketball Court, Horseshoe Pits, Playground Equipment, Picnic Pavilions, Boat Launch                             |
| Port Huron Township RV Campground                 | 134 Campsites, Community Hall, Playground Equipment, Picnic Pavilion  |
| Memorial Park on Beach Road                       | AYO Soccer Fields, Baseball Fields, Fenced Tot Park, 5 Picnic Pavilions, Playground Equipment, Restrooms, Fishing |
| W.P. Thompson Pond (40 <sup>th</sup> Street Pond) | 65-acre Pond, Fishing Piers, 6 Gazebos, Picnic Pavilion   |
| Bakers Field Park                                 | Boat Launch, Fishing, Trails, Picnic Areas  |
| Hoover School Park                                | Playground Equipment, Pavilion & Picnic Area, Basketball Court  |

**ST. CLAIR COUNTY PARKS**

St. Clair County owns and operates nine public parks within the County. These parks include the following parks and additional information on the parks can be found on the St Clair County website including the St Clair County Community Recreation Plan.

St. Clair County Parks total 1,060.5 acres which are within eight parks as detailed below:

- Goodells County Park 405 acres
- Columbus County Park 411 acres
- Fort Gratiot County Park 30 acres
- Woodsong County Park 33 acres
- Fort Gratiot Light Station 5 acres
- Blue Water River Walk County Park 6.5 acres
- North Channel County Park 10 acres
- Wadhams to Avoca Trail 160 acres (12 miles long)

**St Clair County Recreational Facilities**

| <b>Park</b>                                       | <b>Amenities</b>  |
|---|---|
| Woodsong County Park<br>Clyde Township            | Rustic Trails, Natural Areas, 2,800 Feet of Frontage on the Black River   |
| Goodells County Park<br>Wales Township            | Community Center, Visitors Center, Farm Museum, Historic Village of 19 <sup>th</sup> Century Buildings, Garden Center, Animal Barns for County Fair, Equestrian Area, Playgrounds, Splashpad Water Park, BMX Bicycle Track, Model Airfield, Derby Pit, Picnic Pavilions, Special Events Buildings |
| Fort Gratiot County Park<br>Fort Gratiot Township | Lake Huron Beach, Picnic Pavilions, Playground, Walking Trails  |
| Fort Gratiot Light Station<br>City of Port Huron  | 1829 Lighthouse, Light Keepers' Dwellings, 1932 Coast Guard Station, Restored Hospital Building from Old Fort Gratiot   |
| Columbus County Park<br>Columbus Township         | Park Lodge, Picnic Pavilion, Mountain Bike Trail, Hiking/Nature/Skiing Trails, Sledding Hills, Equestrian Trail, 2 Miles of Frontage on the Belle River   |

**Goodells County Park**

Facilities at Goodells County Park are abundant and include the Visitors Center, two playgrounds, river and fishing access, trails, four picnic shelters, historic buildings, a BMX track, a butterfly garden, five special events buildings, equestrian facilities and the splash pad. The park is also a place where the community meets for many annual events.

**Columbus County Park**

Facilities at Columbus County Park include mountain biking trails, walking trails, horse trails, fishing access and permit only hunting. The Belle River runs through the park. In the winter, visitors enjoy winter sports such as sledding and cross-country skiing. The park

has a large visitors center with restrooms and meeting rooms, as well as an outdoor pavilion.

### **Fort Gratiot County Park**

Fort Gratiot County Park features over 800 feet of shoreline along Lake Huron. The 30-acre park includes picnic areas, restrooms, a playground, and paved walking trails. The park is home to the 1971 Tunnel Explosion Memorial.

### **Woodsong County Park**

Woodsong is a passive park with rustic trails that meander to the shoreline of the Black River. The park provides opportunities for hiking, biking, and fishing. A canoe and kayak launch provides access to the river.

### **Ft Gratiot Light Station**

The Fort Gratiot Light Station is the oldest lighthouse in Michigan. The Port Huron Museum serves as a partner in leading tours of the site, programming, and reservations.

### **North Channel County Park**

North Channel Park is undeveloped. The master plan for the park may include a swimming beach, a kayak launch, shoreline fishing, walking trails, pavilions, and a playground.

### **Wadhams to Avoca Trail**

The Trail is over 12.4 miles long and contains 160 acres. At the South end of the trail in Kimball Township, over five miles of trail have been paved. Designed parking areas are located at the Wadhams Road, Imlay City Road, Lapeer Road and Avoca Road trailheads. The non-motorized trail is open to walkers, bicyclists, and equestrians.

### **Pine River Nature Center (Separate non-profit)**

Located adjacent to Goodells County Park, the Pine River Nature Center sits on 111 acres with over 4800 feet of the Pine River meandering through it.

## STATE OF MICHIGAN PARKS

The State of Michigan owns and operates the following facilities in the region:

### State of Michigan Recreation Facilities

| Facility                              | Location   | Amenities  |
|---------------------------------------|--|--|
| W.C. Wetzel State Park                | Lenox Township<br>Macomb County                    | Model airplane landing strip, Hiking, Hunting, Pavilion at landing strip, Cross-country skiing, Picnic tables, Viewing area, Snowmobiling  |
| Algonac State Park                    | Clay & Cottrellville Townships<br>St. Clair County | Boat launches, Hunting, Fishing, Nature trails, Snowmobiling, Hiking, Picnic shelters, Cross-country skiing, Camping, Playgrounds / tot lot  |
| Bald Mountain Recreation Area         | Orion Township<br>Oakland County                   | Cabins, Snowmobiling, Hunting, Picnic tables and shelters, Cross country skiing, Fishing, Playgrounds, Hiking / nature trails, Boat launch, Concessions, Target shooting / skeet, Swimming |
| Lakeport State Park                   | Burtchville Township<br>St. Clair County           | Camping, Cabins, Interpretive program, Picnic tables and shelters, Playgrounds, Hiking trails, Concessions, Swimming, Fishing  |
| Lapeer State Game Area                | Lapeer County                                      | Hunting, Hiking  |
| Metamora-Hadley State Recreation Area | Lapeer County                                      | Camping, Nature /Cross Country skiing trails, Picnic areas / shelters, Swimming  |
| Port Huron State Game Area            | Clyde & Grant Townships<br>St. Clair County        | Hunting, Hiking, Fishing, Bird Watching  |
| St. Clair Flats Wildlife Area         | Harsen's Island, Clay Township, St. Clair County   | Hunting, Boating, Fishing, Nature walks / study  |
| St. John's Marsh Wildlife Area        | Clay Township<br>St. Clair County                  | Wildlife viewing, Hunting  |



### MICHIGAN NATURE ASSOCIATION SANCTUARIES IN THE REGION

The Michigan Nature Association (MNA), a private non-profit organization, owns and maintains several nature preserves in St. Clair, Lapeer, Sanilac and Macomb Counties. These are listed in Table below.

**Michigan Nature Association Sanctuaries in the Region**

| <b>Preserve</b>                                   | <b>County</b> | <b>Size</b> |
|---|---------------|-------------|
| Wilcox - Warnes Memorial Nature Sanctuary         | Macomb        | 44.8 acres  |
| Myron & Isabel Zucker Memorial Nature Sanctuary   | Lapeer        | 70 acres    |
| Birch Creek Nature Sanctuary                      | Sanilac       | 28 acres    |
| James and Alice Brennan Memorial Nature Sanctuary | St. Clair     | 118 acres   |
| Alton T. McGraw Memorial Plant Preserve           | St. Clair     | 4.2 acres   |
| Stephen M. Polovich Memorial Plant Preserve       | St. Clair     | 17.5 acres  |
| Big Hand Road Plant Preserve                      | St. Clair     | 5.4 acres   |
| Trillium Trail Nature Sanctuary                   | St. Clair     | 20.0 acres  |
| Alice W. Moore Woods Nature Sanctuary             | St. Clair     | 66.2 acres  |
| Elmore P. and Irene Jasper Woods Nature Sanctuary | St. Clair     | 48.6 acres  |
| St. Clair Lakeplain Forest Nature Sanctuary       | St. Clair     | 69.0 acres  |
| Red Wing Acres Nature Sanctuary                   | St. Clair     | 40.0 acres  |

The Michigan Chapter of the Nature Conservancy also has nature preserves throughout the State. Dickinson Island is the closest in proximity to Clyde Township. This 7.5-acre preserve is now owned by the State and is a part of the St. Clair Flats preserve area on Dickinson Island in Clay Township. The Thumb Land Conservancy has several nature preserves in St. Clair County; two are in Fort Gratiot Township. The Detroit Audubon Society has a 172-acre preserve in Kimball Township.

### Quasi-Public Recreational Facilities

The Ruby Lion's Club, next to the Ruby Fire Station, has a softball diamond, a picnic pavilion and a public meeting room. Fort Trodd, in Section 33 of the Township, is a large private RV campground with swimming ponds and recreational facilities for campers only. It adjoins the Wadhams to Avoca Trail.

## COMMUNITY SPECIAL EVENTS & RECREATIONAL PROGRAMS

Please provide programming information if it exists.

### STATUS REPORT FOR ALL GRANT ASSISTED PARKS AND RECREATION FACILITIES

Clyde Township has received two previous Michigan Department of Natural Resources grants. The most recent grant was given in 1991 for development Township Hall Park. The required Post Completion Self-Certification Reports are included in the Supporting Documentation section of the Plan.

BF89-580 Bill Bearss Memorial Park  
Project Type: Development  
Appropriation Year: 1989  
Grant Amount: \$18,097  
Status: **Closed**

BF91-183 Township Hall Park  
Project Type: Development  
Appropriation Year: 1991  
Grant Amount: \$30,000  
Status: **Closed**

## **DESCRIPTION OF PLANNING PROCESS**

---

The Planning Process Section includes a description of the overall process that was completed for the development of the Community Recreation Plan. The Planning Process included an assessment of existing park lands, a tour of the properties, opportunities for the public to participate, formal adoption of the plan, and submittal of the plan to local agencies and the Michigan Department of Natural Resources.

### **SYSTEM PLANNING METHOD**

A System Method of Planning was completed which focused on the Township's priorities, needs, level of service and community-wide interests in parks and recreation.

## **DESCRIPTION OF THE PUBLIC INPUT PROCESS**

---

This section of the plan provides a written description of the processes used to encourage and gather public input for the development of the plan.

### **PARK TOUR, INVENTORY, AND ADA ASSESSMENT**

An initial tour of each park facility within the community was completed by Township Parks and Recreation Committee and PMB staff to review and compare the previously completed park inventories and ADA assessments. Each of these areas of the document were updated and needs were documented for consideration within the planning process.

### **EARLY PUBLIC INPUT-PUBLIC ELECTRONIC SURVEY**

An electronic public survey was developed utilizing SurveyMonkey. The survey was developed in August of 2021 and opened for public comment on September 12, 2021. The survey was advertised on the Township's website, via direct emails to stakeholders, and at various public functions. The Township Clerk also placed a public announcement in the local newspaper. The survey remained open during the entire planning process. The results of the survey were utilized in the updating of the Goals and Objectives as well as the Action Plan Sections. The results of the survey are included in the Supporting Documentation Section of this plan.

### **NOTICE OF 30-DAY PLAN REVIEW PERIOD**

A public notice was posted \_\_\_\_\_, 2021, and published in the \_\_\_\_\_ on \_\_\_\_\_, 2021 to announce the opportunity for public review of the plan document, the opportunity for public comment, and the upcoming final public hearing on the Plan on \_\_\_\_\_, 2022. The notice was posted according to Township procedures and a public notice was placed in Newspaper. A copy of the notice, Affidavit of Publication, and the minutes of the meeting are included at the rear of this document in the Supporting Documentation.

### **RESOLUTION OF ADOPTION BY TOWNSHIP BOARD & FINAL PUBLIC HEARING**

On \_\_\_\_\_, 2022 a Final Public Hearing was held by the Township Board to receive comments regarding the plan. Following Final Public Hearing, the Township Board Adopted the Plan. Minutes of the Final Public Hearing, Adoption Resolution, and Minutes of the full meeting, including the public hearing, are included below. These documents are included at the rear of this document in the Supporting Documentation.



## GOALS AND OBJECTIVES

---

The Goals and Objectives section of the plan provides goals for the future of parks and recreation within the community. These goals have been written for Clyde Township based on public input for current and future recreational opportunities. Each goal is further defined by the Objectives that follow. The Action Program section of this plan determines proposed projects that help to meet these goals.

**Goal No 1: To provide multi-generational recreational opportunities and facilities within the community as the Township is comprised of persons of all ages.**

**Objectives:**

- a. To provide activities for each of the major age and activity groups.
- b. To provide for activities and experiences that can be enjoyed together with persons of multiple ages
- c. To allow for all persons of multiple generations, extended family groups, and large groups to universally enjoy the parks.

**Goal No 2: To provide recreational facilities for persons of all abilities both mentally and physically.**

**Objectives:**

- a. To develop new facilities that will expand recreational opportunities for all residents.
- b. To develop new facilities that will meet the Americans with Disabilities Act, (ADA).
- c. To develop new facilities that integrate ADA accommodations in such a way that they are seamlessly used by all residents within the community and to not cause separation of users based on abilities.
- d. As the Township improves each of the parks, the facilities will be designed with ADA and Universal accessibility in mind to continue to increase recreational opportunities for the residents and visitors to the Township.

**Goal No. 3: To continue to support and encourage non-profit organizations to provide recreational programming and special events within the community. As the community is small and the financial resources are limited, the non-profit organizations provide recreational opportunities that Clyde Township could not offer without their support.**

**Objectives**

- a. The Township will continue, as funds allow, to assist the non-profit organizations through the development and maintenance of recreational facilities and programs.

**Goal No. 4: The Township will retain all existing park lands for the use and enjoyment of residents.**

**Objectives**

- a. The Township will not sell existing recreational lands or convert them to non-recreational use.
- b. The Township will continue to maintain, to the best of its ability, the existing park facilities.
- a. The Township will continue to make improvements to the parks based on the Community Recreation Plan.

**Goal No. 6: To continue to provide, as much as possible, free use of the parks and facilities.**

**Objectives:**

- a. Continue to allow for open use of the park lands and to not charge admission to the facilities.
- b. Minimally charge, as required to cover costs, for special events and athletic field maintenance to keep the facilities available for public use.

**Goal No. 7: The Township has both older recreation areas, such as Jake Simpson Wilderness Park, Fire Fighters Park, as well as undeveloped properties such as the Black River Property, which need to be reimaged through the development of site master plans. Site master plans aid in sharing the vision with Township residents as well as potential funding sources. The process will include the development of new site master plans which include phased cost estimates.**

**Objectives:**

- a. Create new master plans that incorporate ADA accessibility and Universal Access into the design and selection of construction materials.
- b. Create a new joint master plan for Jake Simpson Wilderness Park and Township Hall Park which provides active sports facilities, picnicking, a play area, and connecting pathways.
- c. Create an updated master plan for Bill Bearss Memorial Park creating connectivity between the parking, sports and play elements.
- d. Create a master plan for the Black River Property to provide for access to the river.

**Goal No. 8: Because the Black River is the only water course through the community, it has the opportunity to provide for public access to the water resource.**

**Objectives:**

- a. To retain river frontage the existing parks park and provides for ADA access to the river.
- b. Expand riverfront access opportunities when possible along the Black River.

**Goal No. 9: To seek funding through state and local grant sources to assist in funding park capital improvements**

**Objectives:**

- a. Develop Park master plans and conceptual estimates, as well as other materials that assist in the preparation and submittal of grant application

- b. To seek donations and Township funds to assist with matching funds for grants.

## **ACTION PROGRAM**

---

The Action Program states the proposed actions to be taken to carry out the Goals and Objectives of the Plan. The Action Program includes a discussion regarding land acquisition, programming, and facility development.

### **LAND ACQUISITION**

Specific parcels of land for acquisition were not identified.

### **RECREATIONAL PROGRAMMING**

Recreational programming has frequently been provided by non-profit organizations, volunteers and Clyde Township for athletic leagues and special events. The Township will continue to support these volunteer efforts as these groups have been highly effective and successful. Financial limitations will not allow the creation of a Parks and Recreation Department with a park director or programming staff.

### **FACILITY DEVELOPMENT**

Facility development will be focused at this time on the existing Township owned properties. The projects have been ranked by High, Medium, and Low Priorities to provide an overall focus on higher priority planning efforts and projects. The breakout of the projects is included in the spreadsheet that follows and descriptions of the projects are also given.



**ACTION PROGRAM PROJECT LIST ---DRAFT LIST FOR REVIEW AND COMMENT**

**Project Prioritization List  
Clyde Township  
Community Recreation Plan 2022-26**

| <b>High Priority Projects</b>  |
|--|
| Township Hall Park - New ADA Accessible Play Area                      |
| Township Hall/Jake Simpson Wilderness Park - Combined Park Master Plan |
| Jake Simpson Wilderness Park - Additional Pickleball Courts            |
| Bill Bearss Memorial Park - Concrete around Grills for ADA Access      |
| Jake Simpson Wilderness Park - Paved ADA Parking Spaces                |
| Bill Bearss Memorial Park - Paved ADA Parking Spaces                   |
| Bill Bearss Memorial Park- ADA Accessibility to Picnic Shelter         |
| Fire Fighters Park - New ADA Accessible Play Equipment                 |
| Township Hall Park - Accessible Grills at Picnic Pavilion              |

| <b>Medium Priority Projects</b>                                       |
|---|
| Fire Fighters Park - Paved ADA Parking Spaces                         |
| Fire Fighters Park - Accessible Paths Connecting Park Elements        |
| Bill Bearss Memorial Park - New Park Master Plan                      |
| Bill Bearss Memorial Park - Dog Park                                  |
| Bill Bearss Memorial Park - Accessible Paths Connecting Park Elements |
| Jake Simpson Wilderness Park - New ADA Accessible Pay Area            |

| <b>Low Priority Projects</b>                                  |
|---|
| River Access at Black River Property                          |
| Jake Simpson Wilderness Park - New Accessible Picnic Pavilion |

## **Project Descriptions**

The proposed projects are as follows:

### **HIGH PRIORITY PROJECTS**

#### **Township Hall Park-ADA Accessible Play Area**

The existing play equipment at Township Hall Park is several decades old and is in need of replacement to meet current codes and play activities. The new play area will be consolidated to provide for a new play structure and activities, connecting sidewalk, and safety surfacing. The play area will also be designed and constructed to meet current ADA accessibility requirements, and Universal Accessible as allowed.

#### **Township Hall Park and Jake Simpson Wilderness Park Master Plan**

Develop a new park master plan that incorporates both park properties into a larger unified park as the two parks are adjacent and visible to each other. The new master plan will provide for connectivity of facilities with walkways and a balance of facilities that provide for both parks. Development ideas include a new play area (s), connecting walking paths, shared parking, additional pickleball courts, and other desired features. The new master plan will become the basis for future development and grant writing for funding.

#### **Jake Simpson Wilderness Park-Additional Pickleball Courts**

The community use of the existing pickleball courts remains high and the community continues to discuss the desire for additional courts. There is available parkland within the park to allow for the new courts. The location will be determined as part of the master planning process.

#### **Bill Bearss Memorial Park and Township Hall Park ADA Accessible Concrete at Grills**

The existing grills at the pavilion are located within the lawn area and do not provide ADA access for the use of the grills. Concrete surfaces connecting to the pavilion will be added to increase the accessibility of the existing grills.

#### **Jake Simpson Wilderness Park and Bill Bearss Memorial Park ADA Accessible Parking**

Provide designated ADA parking within the parking lots with paved surfaces, required striping and signage to provide for greater ADA accessibility within the parks.

#### **Bill Bearss Memorial Park ADA Access to Picnic Pavilion**

Provide an ADA connecting walkway from the parking area to the picnic shelter to provide for ADA accessibility to the structure.

### **Firefighters Park ADA Accessible Play Area**

As the existing equipment is not ADA accessible and is older, the play area will be revitalized with ADA accessible play equipment, connecting walkway, and safety surfacing to increase accessibility for both children and adults.

## **MEDIUM PRIORITY PROJECTS**

### **Fire Fighters Park-Paved Parking with ADA Parking Spaces**

Provide paved ADA parking spaces with striping and signage to improve overall accessibility to the park.

### **Bill Bearss Memorial Park-Master Plan**

Update the master plan of the park to review the current and future needs for the number and type of fields, the potential for a dog park, and improve ADA accessibility with connecting paved walkways, review play area, and other site amenities.

### **Bill Bearss Memorial Park-Dog Park**

Identify and location and construct a new dog park within the park. Include ADA accessibility to and within the dog area to allow for all residents to bring dogs and allow them to play and exercise.

### **Bill Bearss Memorial Park-Connecting Pathways**

Construct connecting pathways between the parking, pavilions, concession, fields, play areas, and other amenities to provide for ADA accessibility and the ability to use the walkways for exercise.

### **Jake Simpson Wilderness Park- Play Area**

Within the master plan process review the play areas of both Jake Simpson and the Township Hall Park regarding the size, type, and quantity of play area desired. Potentially combine the play areas, or develop them to each be unique. New play areas will include ADA accessible play, surfacing, and walkways.

## **LOW PRIORITY PROJECTS**

### **Black River Property River Access**

Develop the riverfront property to provide for vehicle access and parking, as well as facilities to access the river.

### **Jake Simpson Wilderness Park Picnic Pavilion**

Construct a new picnic pavilion in Jake Simpson Park to provide for drop-in and special event picnics.

## **SUPPORTING DOCUMENTATION**

---

The following supporting documentation will be added to the plan at final completion after adoption.

**Early Input/Survey Results**

**Public Notice of Draft Plan for 30 Days of Public Comment**

**Public Notice of Public Hearing**

**Minutes from the Public Hearing**

**Full Minutes from the Township Board Meeting with Resolution of Adoption**

**Resolution of Adoption**

**Transmittal Letters to the St Clair County and Southeast Michigan Council of Governments**

**Completion of Required MDNR Checklist of Materials**

**MDNR Grant Project Post Completion Forms**